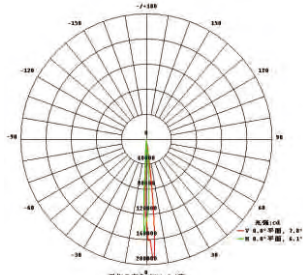
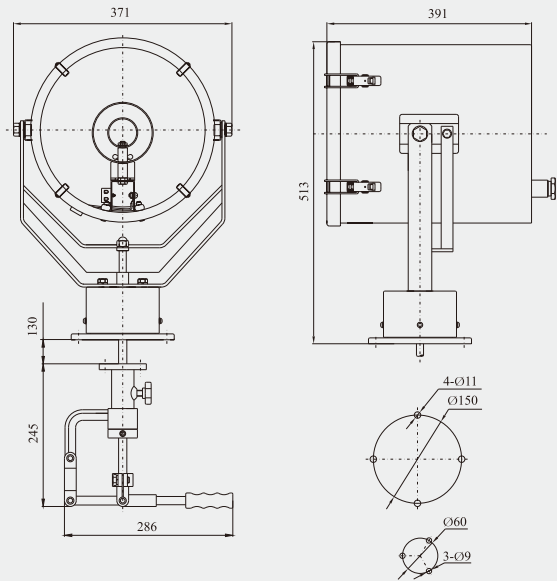


TG26 500W



TG27 1000W



**适用范围 The Scope of Application**

适用于船舶夜间航行作远距离搜索照明之用，尤其是通过狭窄航道、内河河道等比较复杂的水域时照射航道及两岸，水面搜索用。

Applied to far distance illumination and searching when night navigation, especially for illumination of sea-route and two banks and surface search when across the complex water area, such as narrow channel and the inland river riverway etc.

型号 Type	TG26		TG27	
额定电压 Rated Voltage	24V	AC220V,50/60Hz		
功率 Power	250W	300W	500W	1000W
光源 Illuminant	卤钨灯 Tungsten Halogen Lamp			
光源颜色 Illuminant Color	白 White			
灯座 Lamp Holder	G6.35	GY9.5		GX9.5
照射距离 Exposure Distance	/	250m	280m	450m
调节方式 Adjustment Method	手动调节 Manual Regulation			
水平角度 Horizontal Angle	360°			
垂直角度 Vertical Angle	俯仰30° Pitch 30°			
防护等级 Protection Class	IP56			
电缆外径 Cable Outside Diameter	Ø10~Ø14			
安装方式 Installation Method	底座式 Seat-mounted Type			
环境温度 Ambient Temperature	-30°C ~ +55°C			
灯体材质 Lamp Body Material	不锈钢 Stainless Steel			
灯罩材质 Lamp Shade Material	钢化玻璃 Toughened Glass			
重量 Weight	20.5kg			
附件 Annex	升降杆 Lifting rod			